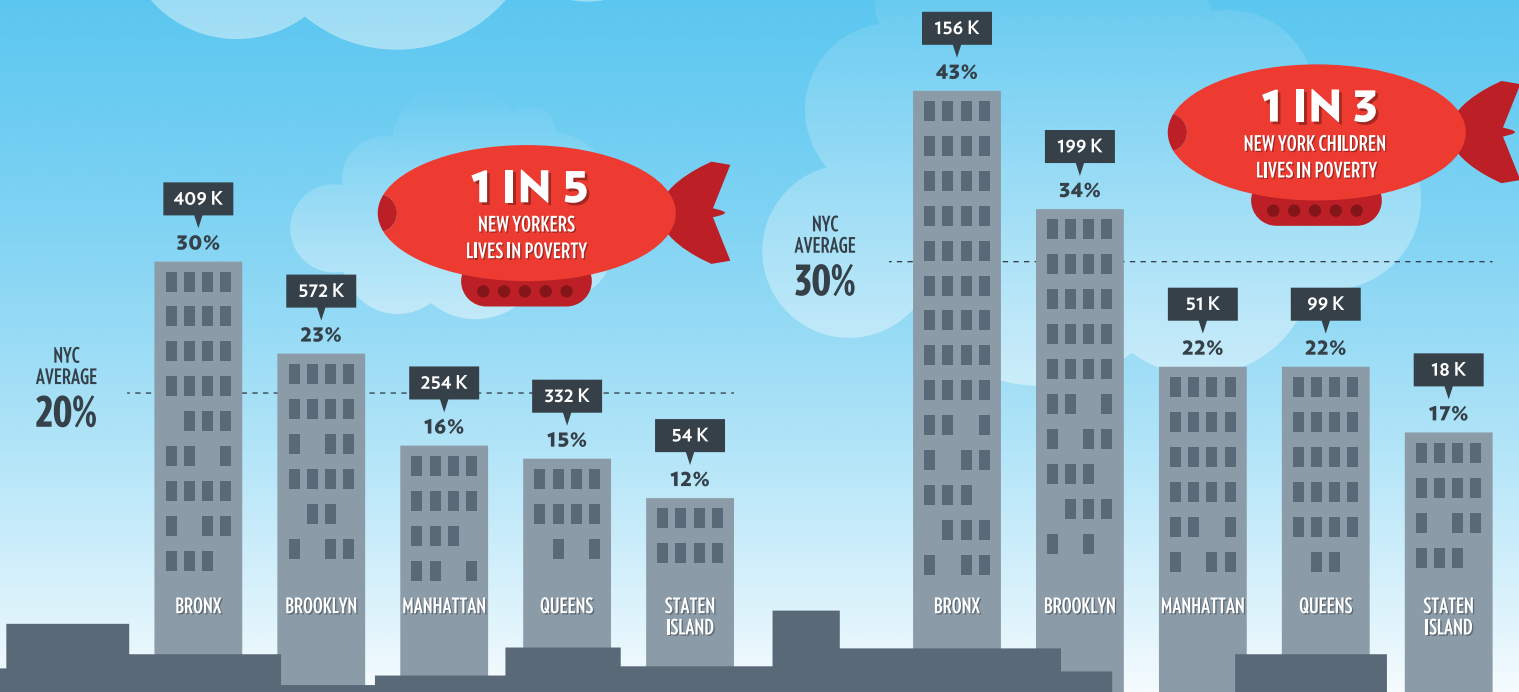


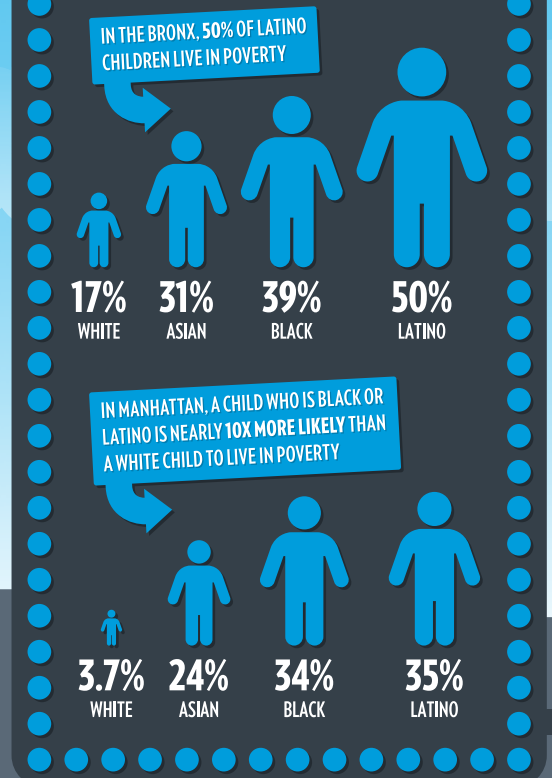
# Keeping Track of New York City's Children: The Impact of the Recession

PERCENTAGE OF TOTAL POPULATION OF NEW YORKERS LIVING IN POVERTY

PERCENTAGE OF TOTAL POPULATION OF NEW YORK CHILDREN LIVING IN POVERTY



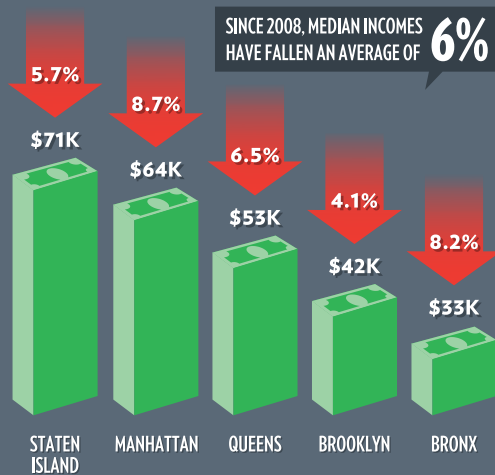
RACIAL & ETHNIC DISPARITY OF CHILDREN LIVING IN POVERTY



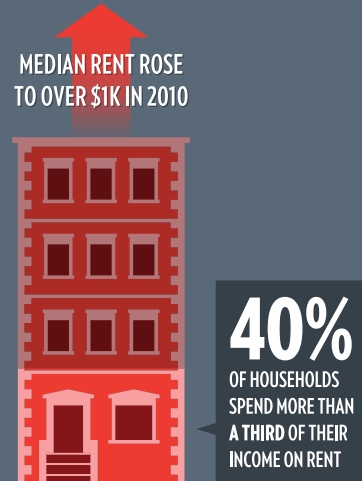
**CHILD ADVOCACY IS MORE IMPORTANT THAN EVER.**

Keep informed. Become a leader. Take action.

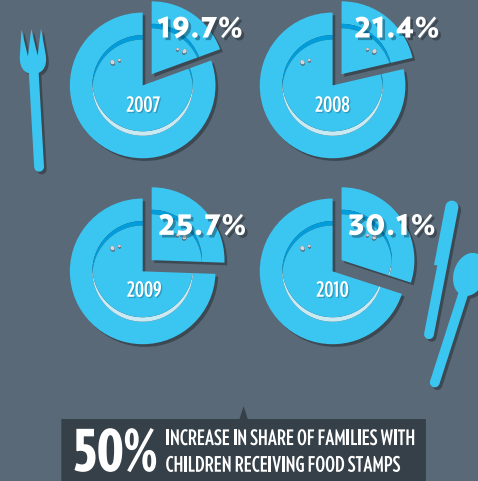
MEDIAN NEW YORK CITY INCOME



HOUSING COSTS



FOOD STAMPS



A \$1 INVESTMENT YIELDS:

|                          |       |  |
|--------------------------|-------|--|
| PREVENTION PROGRAMS      | \$140 | of savings in later juvenile justice and law enforcement costs                       |
| PRE-SCHOOL PROGRAMS      | \$17  | return in increased earnings, crime savings, educational savings and welfare savings |
| PARENT COACHING PROGRAMS | \$4   | savings in hospitalization costs resulting from child abuse                          |
| PRE-NATAL CARE           | \$3   | savings in the cost of care for low birth-weight babies                              |
| AFTER-SCHOOL PROGRAMS    | \$3   | savings for participants and taxpayers   |